

# Central Estuary Plan

## A VISION FOR OAKLAND'S WATERFRONT

### Specific Plan and Environmental Assessment



CENTRAL ESTUARY PLAN



A VISION FOR  
OAKLAND'S WATERFRONT

# Plan Process

## ■ 8 WORKSHOPS

- ✓ March 23 – Define Project Vision
- ✓ April 22 – Confirm Project Vision,  
Introduce Healthy Development
- ✓ June 18 – Existing Conditions
  - **July 11 – Alternative Concepts for the Area**
  - September – Refined Alternatives
  - October – Preferred Alternative
  - TBD – Draft Plan
  - TBD – Final Plan





# Workshop Process – Base Map



Source: City of Oakland, Alameda County Assessor's Office, Community Design + Architecture, ARUP 2008

July 11, 2009

## Existing Land Use & Community Uses

Subarea Boundaries	Utilities	Publicly Owned	Other
Existing Land Use	Automotive	Mixed Use	Industrial Lot
Industrial (Heavy)	Live/Work	Retail/Commercial	Commercial Lot
Industrial (Light)	Residential	Office	Vacant Lot
Industrial (Warehouse)	Condominium	Institutional	Parking Lot

## Community Uses

Police Facility	Bank/Credit Union
Fire Department	Library
Grocery Store	School
Convenience/Liquor Store	

Parks - Existing and Under Construction/Proposed
AC Transit Stops
AC Transit Routes
Freight Rail

## Bay Trail

Existing Waterfront
Improved On-Street
Unimproved On-Street
Under Construction/Proposed

Roadway Undercrossing
Pedestrian/Bike Only Undercrossing



Note: This is a conceptual and preliminary map. It is not intended to be used for legal purposes. The project will require a comprehensive environmental analysis and review by the City of Oakland. The project will require a comprehensive environmental analysis and review by the City of Oakland. The project will require a comprehensive environmental analysis and review by the City of Oakland.



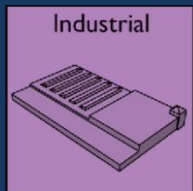
CENTRAL ESTUARY PLAN



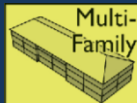
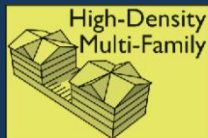
A VISION FOR  
OAKLAND'S WATERFRONT

# Workshop Process – Development Types

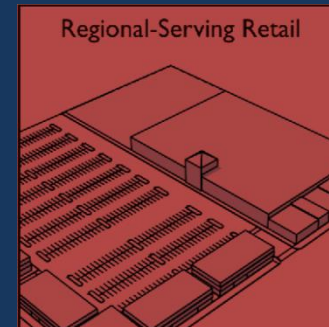
## Employment



## Residential

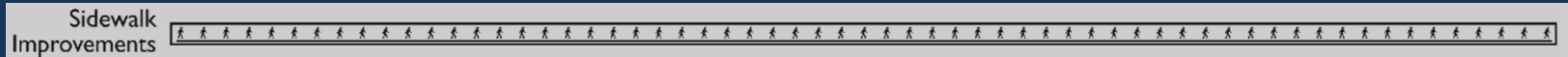
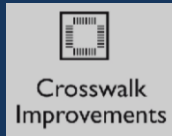


## Retail



# Workshop Process – Infrastructure Improvements

## Transportation



## Civic

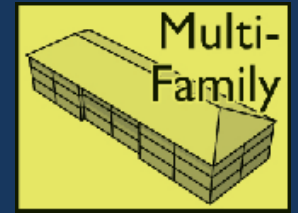




# Townhome

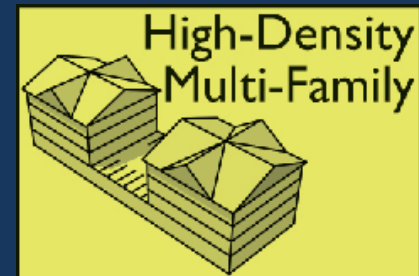


# Multi-Family (2-4 Stories)





# High-Density Multi-Family (5+ Stories)



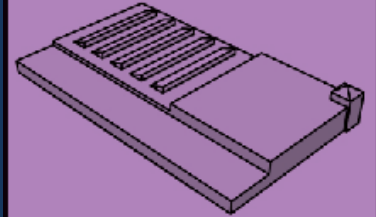


# Live/Work



# Industrial

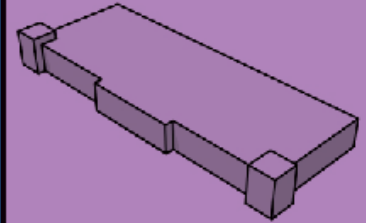
Industrial





# Industrial / R&D / Flex Space

Industrial/  
R&D/Flex



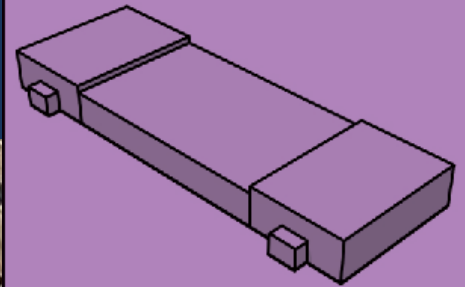
CENTRAL ESTUARY PLAN



A VISION FOR  
OAKLAND'S WATERFRONT

# Warehouse/ Goods Movement

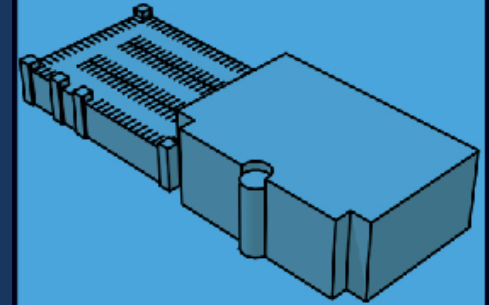
Warehouse/  
Goods Movement





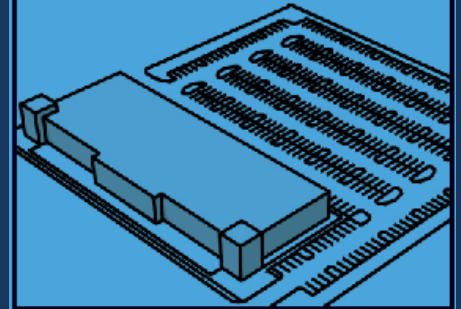
# Employment with Structured Parking

Employment with Structured Parking



# Employment with Parking Lot

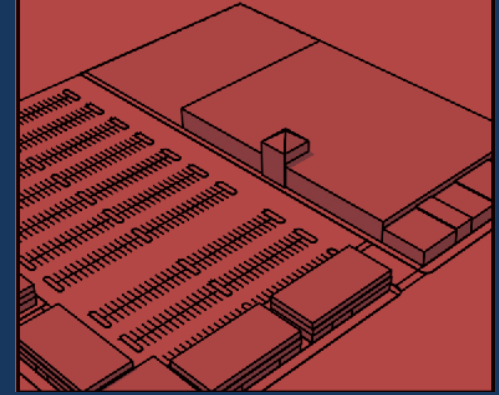
Employment with  
Parking Lot





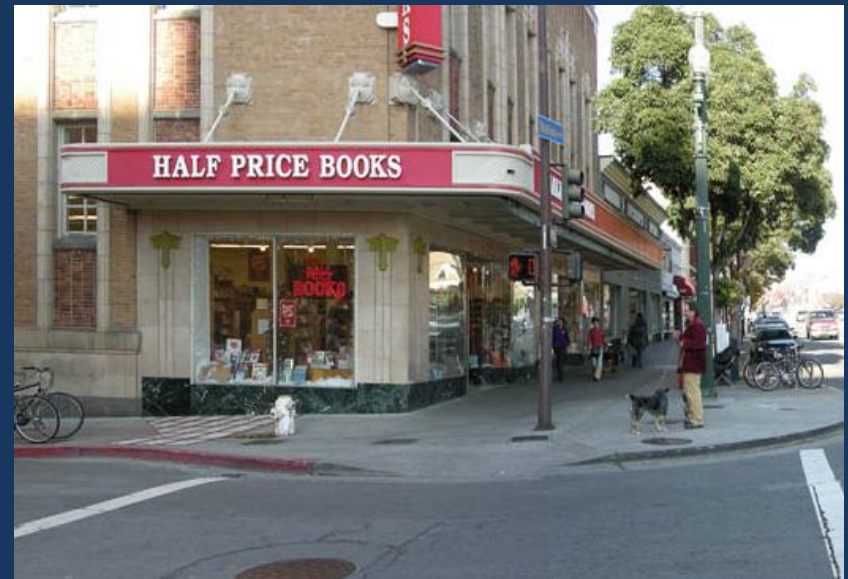
# Regional-Serving Retail

Regional-Serving Retail



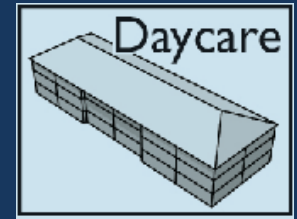
# Neighborhood-Serving Retail

Local  
Retail

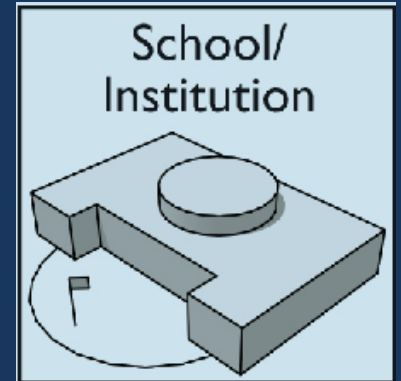




# Community Center/ Daycare



# School / Institution





# Plaza

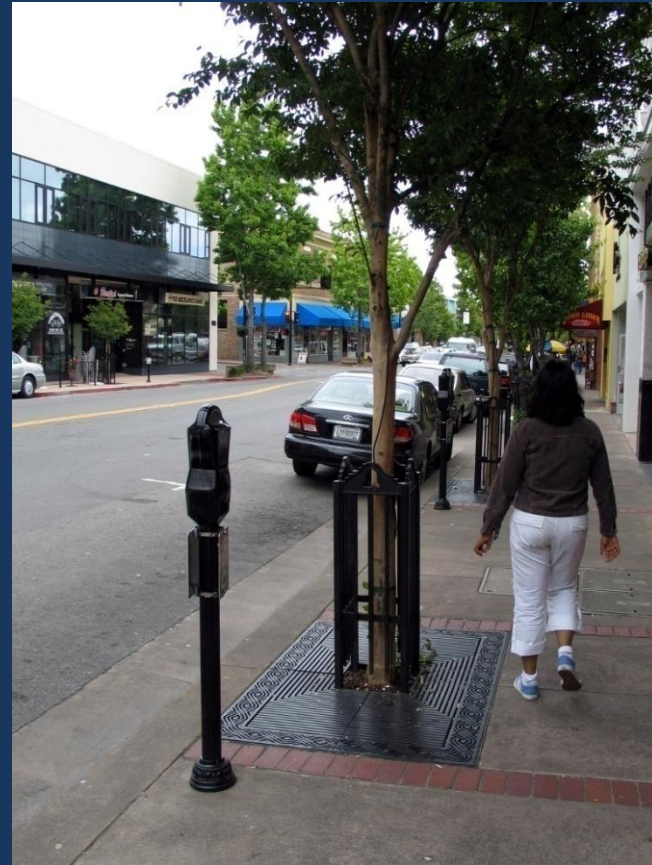


# Park





# Street Trees



# Boulevard

New Boulevard





# Roundabout



# Traffic Calming

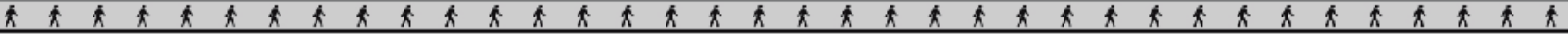




# Transit Stop Improvement



# Sidewalk Improvement





# Next Steps

The team will compile your input into a series of Land Use and Transportation Alternatives



# Next Steps

The alternatives will be analyzed by technical consultants to consider:

- Transportation Impacts
- Economic Opportunities and Impacts
- Socio-Economic and Workforce Impacts  
(including affordable housing and displacement)
- Sustainability Opportunities
- Public Health Impacts

In other words: What do the different alternatives mean for the future of the area?



CENTRAL ESTUARY PLAN



A VISION FOR  
OAKLAND'S WATERFRONT



# How to Stay Informed and Involved

- Visit the project website:  
**[www.oaklandnet.com/central\\_estuary\\_plan](http://www.oaklandnet.com/central_estuary_plan)**
- Email the team:  
**[central\\_estuary\\_plan@oaklandnet.com](mailto:central_estuary_plan@oaklandnet.com)**
- Leave a message: **(510) 238-7737**
- Attend and encourage others to attend community workshops –  
Next workshop:  
**September**



**CENTRAL ESTUARY PLAN**



**A VISION FOR  
OAKLAND'S WATERFRONT**